



PATCHING SYSTEMS  
AUDIO, VIDEO, SERIAL DATA  
600 WEST ELK AVENUE  
GLENDALE, CA. 91204  
TEL 818 500-8142  
FAX 818 500-7062  
WWW.BITTREE.COM

DATA CONTAINED IN THIS DOCUMENT  
IS PROPRIETARY AND SHALL NOT BE  
DISCLOSED, COPIED OR USED FOR  
PROCUREMENT OR MANUFACTURE  
WITHOUT EXPRESS WRITTEN PERMISSION  
OF BITTREE INCORPORATED

DWG. NO. :28S1WTHDRE.DWG

SERIES : WECO

DWG. SCALE : FULL

PANEL HEIGHT:  
1 RU (1.72") [43.688]

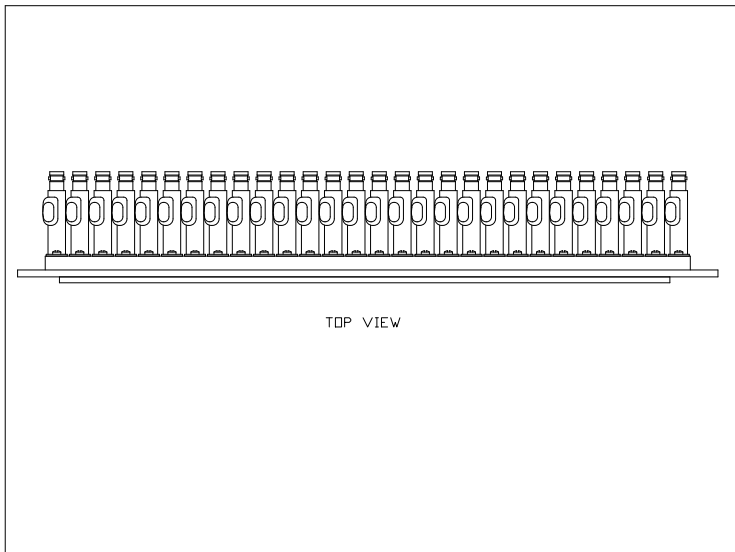
DESIGNATION : DS800-15

FINISH : POWDER COAT

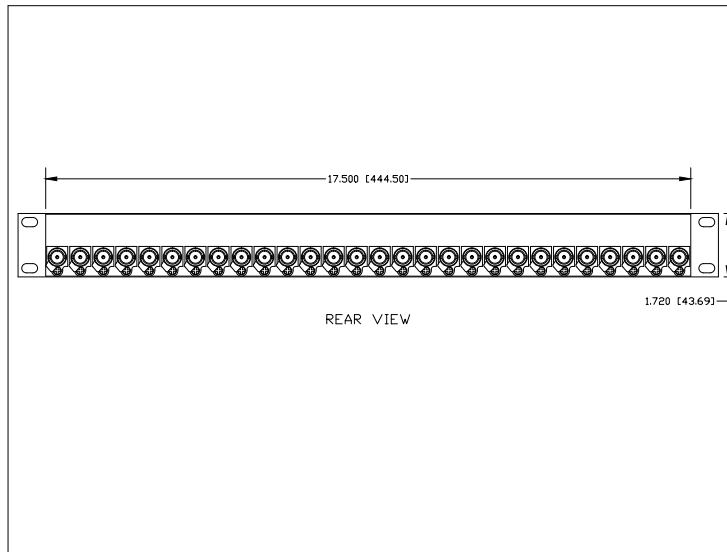
PANEL MATERIAL:  
3/16" [4.7625] ALUMINUM

JACK SCREWS: 6-32X3/8 FHP

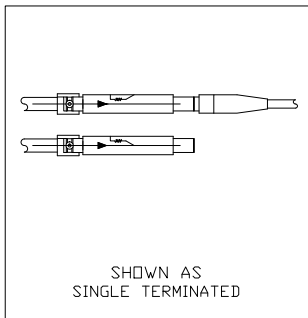
LAYER (DS\_INSERT) IS PROVIDED  
FOR THE CREATION OF LEGEND  
STRIPS FOR THIS PATCHBAY. THE  
RED OUTLINE MATCHES THE SIZE  
OF INSERT.  
PLEASE NOTE THE VIEWABLE AREA  
IS LISTED IN NOTES BELOW THE  
FRONT PANEL VIEW.



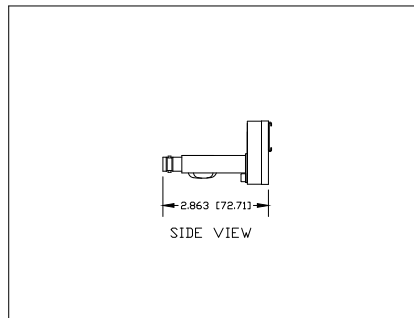
TOP VIEW



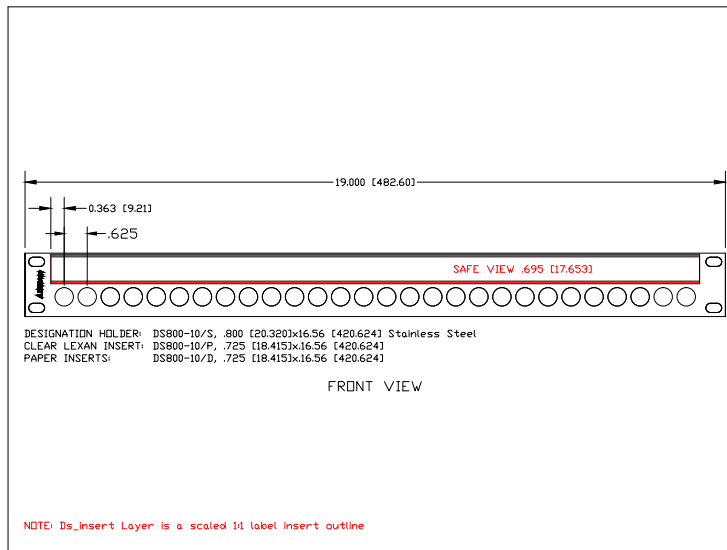
REAR VIEW



SHOWN AS  
SINGLE TERMINATED



SIDE VIEW



FRONT VIEW

DESIGNATION HOLDER: DS800-10/S, 800 [20.320]x16.56 [420.624] Stainless Steel  
CLEAR LEXAN INSERT: DS800-10/P, .725 [18.415]x16.56 [420.624]  
PAPER INSERTS: DS800-10/D, .725 [18.415]x16.56 [420.624]

NOTE: Ds\_insert Layer is a scaled 1:1 label insert outline